

One of the strongest points for using Clicker 4 is that material can be personalised for a particular pupil or group of pupils, therefore making the work more motivating. Clicker 4 will take various types of graphics including digital pictures and graphics for reading schemes such as Oxford ReadingTree and Wellington Square. Clicker will also run video files in avi format.

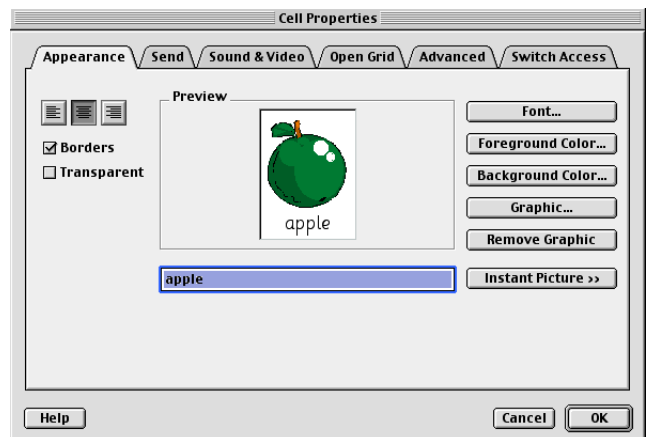
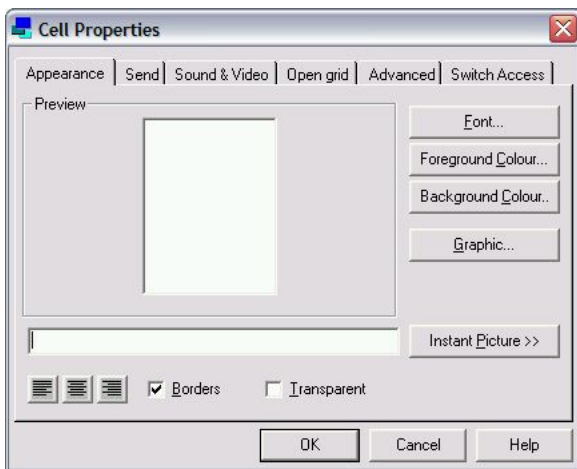
Inserting pictures and other graphics

Open up Clicker 4 and then Click on Make a Clicker grid and choose 'Sentence Building' and 'I like 1'. This is a really good example of a grid that would need pictures to fully support the learner. Decide on four pieces of fruit/drinks/activities that you want to use.

To add a graphic

PC – Shift right click while pointing at cell; Mac – Command (apple) click on the cell.

This will open up the **Cell Properties**



Type the name of the picture you want and then click **Instant Picture**. If there is a picture with this name it will appear in the box. If you click **Instant Pictures** again there may be other pictures of the same name. Click on **OK** to insert into the cell.

Insert a picture from My Picture or another program

If you don't see any that you like or you have a picture you specifically want to use then you need to manually select the file.

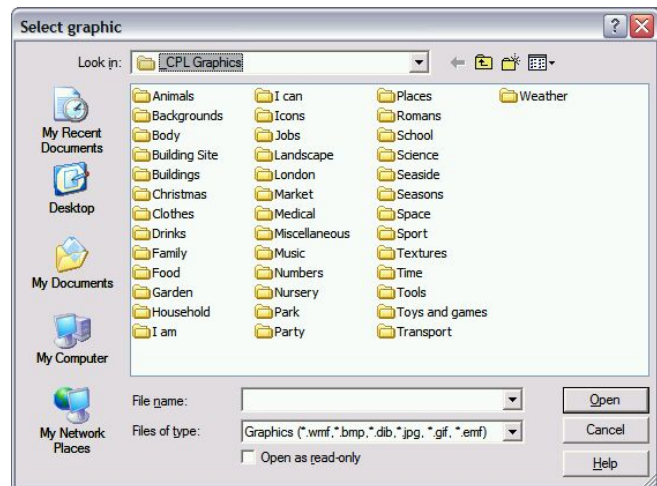


Select the cell and open up cell properties as before.

Now instead of clicking on instant picture, click directly above on **Graphic**. This will take you into the graphic set that comes with Clicker CPL graphics.

From here you can search through any of the categories to find the picture you want.

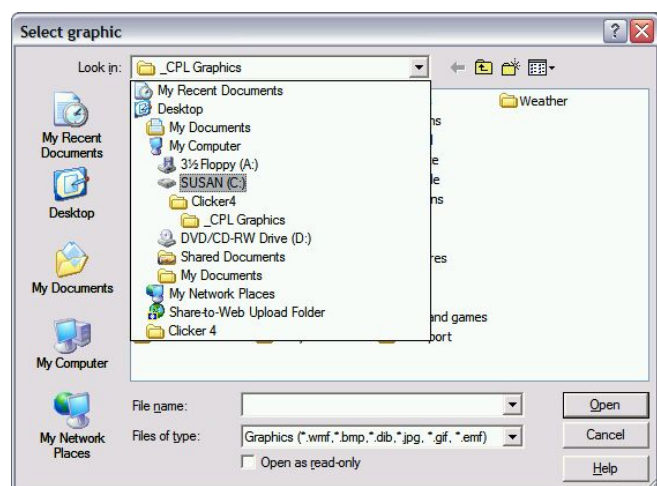
Select the picture and it will be placed in the cell.



If you wish to use a graphic stored elsewhere then you need to know where the graphics are stored in the computer.

Use the drop down menu next to 'Look in' CPL graphics' and locate the folder.

Now you can search through your files to find the graphic you want.

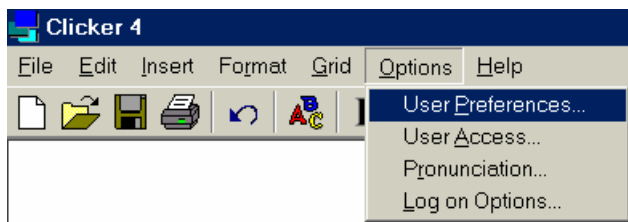


If you are going to use digital photographs then it's a good idea to keep them in My Photos or to create a similar file on the Mac. Sensible file management will make life a whole lot easier.

Managing pictures and libraries in Clicker

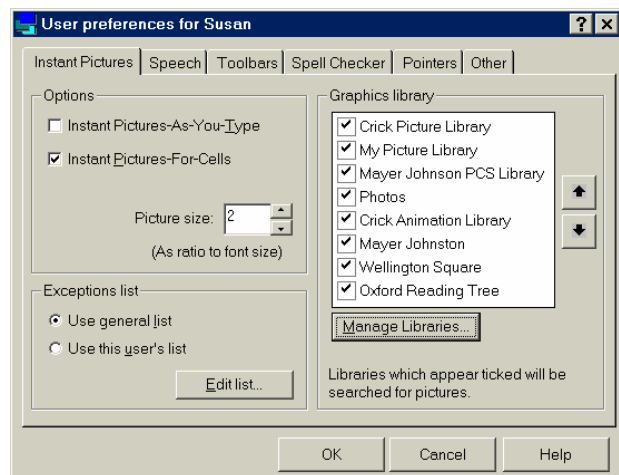
When you locate where the pictures are stored, there might be rows of files and maybe some individual photos. Double click on a file to open it, click on the photo you want to highlight it, and then click on **OK**. Your photo will then appear in the preview window in *cell properties* window in Clicker. Now you can type the text you want to appear with the photo, click **OK** and the photo and text will appear in the cell.

Another way is to use instant picture in *cell properties*. You can set up all the photos and clip art in your computer to be accessed through instant pictures.



Go to **Options** in the toolbar
Then **User Preferences**
The user preferences screen will appear.

To connect up the photos and clip art in your computer make sure **Instant Pictures** is the front screen and click once on **Manage Libraries**. This will open up a list of all the libraries you have already registered, to register a new one just click on **Register New Libr**



The **Picture Library Wizard** will now take you through the steps.

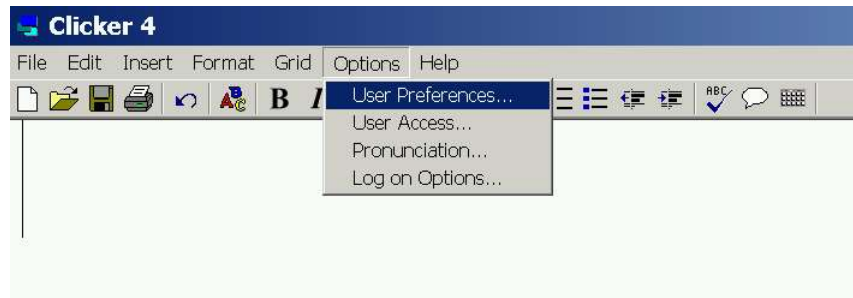
1. Give a **name** to the library e.g. PCS symbols or ORT Clip Art
2. **Browse for folder** through the computer, click to highlight, click **OK**.

On the instant picture screen in user preferences, look at **Graphics library** and make sure all the boxes have a tick in them.

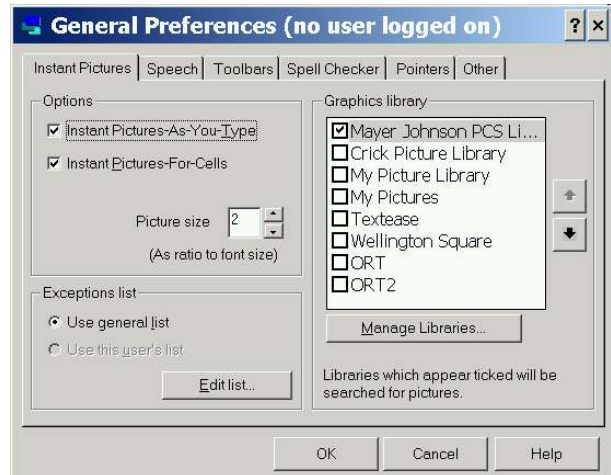
There is a folder called '_My Pictures' within the Clicker folder on the 'c' or hard drive, you can copy or just drag pictures into this folder. This folder is automatically linked to the instant pictures and you don't have to manage it.

Setting up Clicker as a symbol processor.

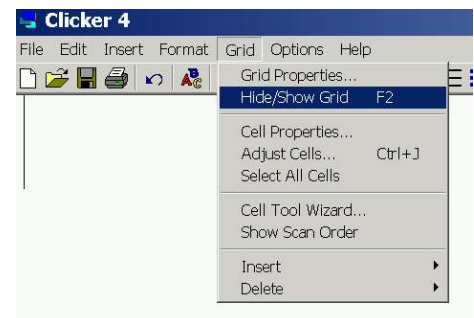
As before, open up Clicker 4 and log on as none. Go to *Options* and then *User Preferences*.



Make sure that *Instant Pictures-As-You-Type* is ticked. Click on **Mayer Johnston PCS** in the graphics library and using the arrow up, click till PCS is at the top of the list. Deselect all the others: this means that Clicker will only use PCS symbols for the words that you type in. Click on OK.



If you wish to only have ClickerWriter and are not using the grid, you need to remove the grid for Clicker 4. On the computer keyboard, press the F2 key (pc) or from within Clicker Go to *Grid* and then *Hide/ Show Grid*



Now Clicker will have a blank page and as you type symbols will appear for the words.



Using Video Clips in Clicker Grids

Clicker 4 can play video clips that have been saved as .avi files. The Digital Blue Movie Creator uses this format so any clips can be saved and exported as .avi files and stored on the hard disc or other suitable storage device. Some digital cameras can take short movie clips and, depending on the make, these may be .avi files and can also be used.

.AVI Video clips

These can only be added to **cells** – not to text or graphic boxes such as those used in the Bookmaking templates.

Load **Clicker 4** and create (or **Open**) the grid to be used.

Shift-right click on the cell that is going to play the video clip and open the **Cell Properties** box.

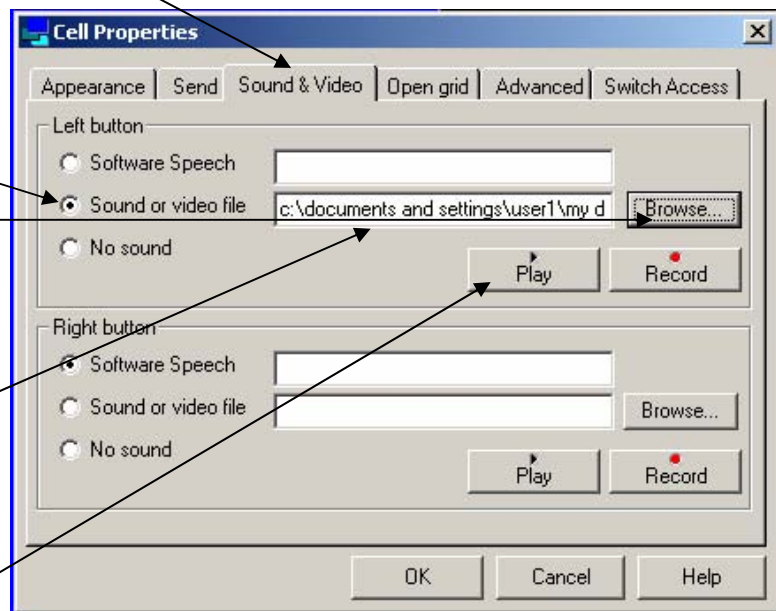
Click on the **Sound and Video** tab.

Click on the **button** beside Sound or video file

Click on **Browse**

Find the **video clip** to be played and double click on it. Its pathname (the information that the program needs to find the file) will appear in the Sound or video box.

To make sure the video **plays** in the correct place on the page click on the play button.



The Video Position box appears and you move it over the cell where the video is to be played – resize it as well if necessary – then click on Play to make sure it is in the correct place. When it is correctly positioned click Okay.

You can put a graphic or photo in the cell to indicate the content of the film. Now when the cell is clicked the film will play.